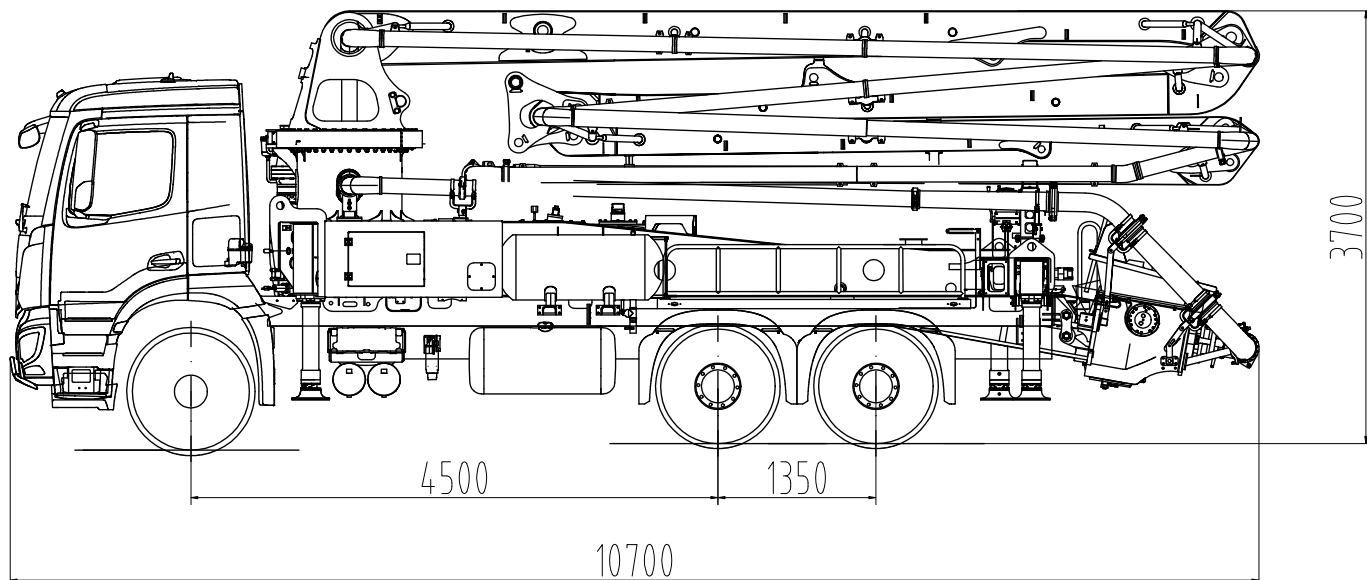


Truck-mounted concrete pump

SY30 Z4-150

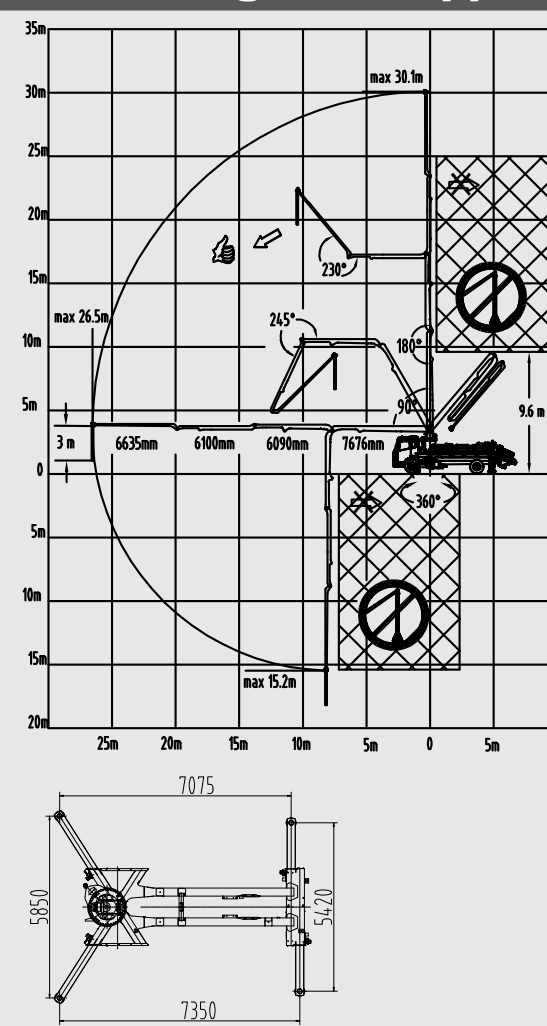


Note: Standard version. Dimensions and weights depend on truck, pump model and equipment. For illustration only.

Technical data

Boom	Folding system	4-arm Z
	Vertical reach	30.1 m
	Horizontal reach	26.5 m
	Reach depth	15.2 m
	Unfolding height	9.6 m
	End hose length	3 m
Support	Outrigger spread front	5.9 m
	Outrigger spread rear	5.4 m
Dimensions	Overall length	10.7 m
	Width	2.5 m
	Height	3.7 m
Core pump	Output	137 m ³ /h
	Pressure	60 bar
	Strokes/min	34
	Delivery cylinder Ø	230 mm
	Stroke length	1600 mm

Reach diagram / support



Standard Equipment SY30 Z4-150				
Chassis	Transfer Gear Box		Support	OSS one side support (assistance device)
	Towing eye			Support plates (4x) in magazine (2x) open
Cleaning	Water tank 400 l			Swivel support plates
	Water pump 150 l/min 20 bar			
Delivery line	2-layer delivery line – DN 125, 5.5"		Safety	Chassis horn via remote control on hopper
	End hose 3 m DN 125, 5.5"			Handrail on rearsteps
Hopper	Concrete hopper with agitator			Horn at the boom, button on rear controlbox
	Central lubrication hopper, hydraulically			Warning device boom not in cradle
	Hard metal wear parts kit			
	Switchover cylinder diameter = 100 mm			
	Agitator safety switch off, lever switch			
Lighting	Working light for illuminating hopper		Additional features	User manual and spare part list
	Side marker lamps			Stowage Box
Pump	Core pump with 1600 mm stroke			Painting: Pedestal, hopper, arm assembly and delivery line in RAL 9016 Traffic white
	Delivery cylinder with 230 mm diameter			Platform aluminum
	Core pump with 137 m³/h delivery rate			Rear steps, left & right side
	Delivery cylinder chrome-plated			Plastic hopper cover, foldable
	Delivery piston standard			Vibrator on hopper grid, radio remote/on site controlled
Control System	SANY SYLD user interface display			
	SANY SYMC control system			
	Radio remote control propotional			
	2nd radio remote control incl. 40 m cable			

See quotation for exact serial delivery scope.

Materials and specifications are subject to change without further notice in accordance with our continuous technical innovations. Photos and illustrations may include additional equipment.
All rights reserved. 23 11

Putzmeister Concrete Pumps GmbH

Max-Eyth-Straße 10 · 72631 Aichtal, Germany
P.O.Box 2152 · 72629 Aichtal
Tel. +49 (7127) 599-0 · Fax +49 (7127) 599-520
pmw@putzmeister.com · www.putzmeister.com